



Smart thinking for heavy rigging



www.intelliroppe.com

Load monitoring for soft rigging equipment

- Intellirope is an early-stage startup developing load monitoring products for soft rigging equipment
- Intellirope products provide full-range load monitoring, advance overload warning, and usage tracking
- Products enable continuous load monitoring or spot checking on-site or remote



Markets



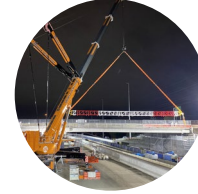
Renewables



Aviation



Shipbuilding



Construction



Oil & Gas



Manufacturing



Marine Recreation



Military & Defense



Marine Salvage



Commercial Fishing



Shipping



Automotive

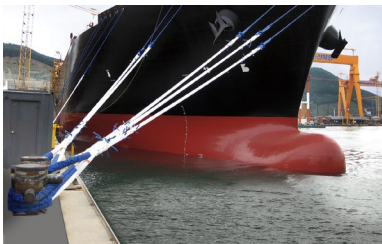
Applications

Lifting



- Avoid downtime and late delivery
- Reduce risk to valuable or sensitive cargo
- Eliminate guess work
- Improve accountability for misuse of slings
- Validate lifting plan assumptions
- Be alerted to asymmetric or unexpected loads

Mooring



- Prevent snapback injuries
- Prevent damage to pier-side equipment
- Remotely monitor unattended vessels
- Get remote notification of vessels adrift
- Recall post-incident Blackbox recordings
- Reduce insurance claims
- Reduce recordable incidents (TRIR)
- Comply with OCIMF MEG4 guidelines

Tiedowns



- Check load tension in cargo tiedowns and sea fastening
- Monitor excessive or insufficient load
- Monitor peak loads due to vessel motions
- Protect assets and safeguard mission

Towing



- Prevent snapback injuries
- Test bollard-pull capacity
- Free grounded vessels without damage or injury
- Reduce liability risk

Vehicle/Vessel Recovery



- Prevent snapback injuries
- Prevent projectile injuries
- Measure resistance of stuck objects
- Right-size pulling equipment
- Monitor parabuckling maneuvers

Paracord



- Validate computational simulations
- Apply condition monitoring to maintenance schedules

Product Development

Synthetic Rope



- Clamp-on sensor
- Measures load tension in pounds
- Multi-colored warning lights and alarm
- Tare function
- Quick release pin for easy installation-removal
- RFID enabled
- Structural failure does not result in loss of control
- 3,000+ pound safe working load
- Patent pending

Web Sling



- Clamp-on sensor
- Measures load tension in pounds
- Multi-colored warning lights and alarm
- Quick release pin for easy installation-removal
- RFID enabled
- Structural failure does not result in loss of control
- Patent pending

Round Sling



- Integral sensor
- Bluetooth wireless receiver
- Measures load tension in pounds
- Multi-colored warning lights and alarm
- RFID enabled
- Patent pending

Intelliroppe

A large white boat is being hoisted by a crane on a barge. The boat is supported by a complex system of white metal struts. Several workers in hard hats are visible on the barge and in the background. The scene is set on a body of water under a cloudy sky.

Contact:

Jason Hill

508-451-3748

Jason@intelliroppe.com

www.intelliroppe.com